

Cognex Vision Software

GigE Vision Cameras

User's Guide

2023 February 10
Revision: 9.10.0.2

Legal Notices

The software described in this document is furnished under license, and may be used or copied only in accordance with the terms of such license and with the inclusion of the copyright notice shown on this page. Neither the software, this document, nor any copies thereof may be provided to, or otherwise made available to, anyone other than the licensee. Title to, and ownership of, this software remains with Cognex Corporation or its licensor. Cognex Corporation assumes no responsibility for the use or reliability of its software on equipment that is not supplied by Cognex Corporation. Cognex Corporation makes no warranties, either express or implied, regarding the described software, its merchantability, non-infringement or its fitness for any particular purpose.

The information in this document is subject to change without notice and should not be construed as a commitment by Cognex Corporation. Cognex Corporation is not responsible for any errors that may be present in either this document or the associated software.

Companies, names, and data used in examples herein are fictitious unless otherwise noted. No part of this document may be reproduced or transmitted in any form or by any means, electronic or mechanical, for any purpose, nor transferred to any other media or language without the written permission of Cognex Corporation.

2023 February 10 3:30 PM

Revision: 9.10.0.2

Copyright © 2019. Cognex Corporation. All Rights Reserved.

Portions of the hardware and software provided by Cognex may be covered by one or more U.S. and foreign patents, as well as pending U.S. and foreign patents listed on the Cognex web site at: [cognex.com/patents](https://www.cognex.com/patents).

The following are registered trademarks of Cognex Corporation:

Cognex, 2DMAX, Advantage, AlignPlus, Assemblyplus, Check it with Checker, Checker, Cognex Vision for Industry, Cognex VSOC, CVL, DataMan, DisplayInspect, DVT, EasyBuilder, Hotbars, IDMax, In-Sight, Laser Killer, MVS-8000, OmniView, PatFind, PatFlex, PatInspect, PatMax, PatQuick, SensorView, SmartView, SmartAdvisor, SmartLearn, UltraLight, Vision Solutions, VisionPro, VisionView

The following are trademarks of Cognex Corporation:

The Cognex logo, 1DMax, 3D-Locate, 3DMax, BGAll, CheckPoint, Cognex VSoC, CVC-1000, FFD, iLearn, In-Sight (design insignia with cross-hairs), In-Sight 2000, InspectEdge, Inspection Designer, MVS, NotchMax, OCRMax, PatMax RedLine, ProofRead, SmartSync, ProfilePlus, SmartDisplay, SmartSystem, SMD4, VisiFlex, Xpand

Portions copyright © Microsoft Corporation. All rights reserved.

Portions copyright © MadCap Software, Inc. All rights reserved.

Other product and company trademarks identified herein are the trademarks of their respective owners.

Table of Contents

Legal Notices	2
Table of Contents	3
Symbols	4
Cognex Software and GigE Vision Cameras	5
Security Requirements	5
GigE Vision Camera Networks	5
GigE Vision Network Adapters and Switches	6
Install Your Cognex Vision Software	7
GigE Vision Configuration Tool	7
Network Adapter IP Address	8
Camera IP Addresses	9
Check Windows Firewall Status	9
Change System Properties	10
Disable Unused Network Clients	11
Using GigE Vision Cameras	12
Video Formats	12
Supported GigE Vision Features	12
GigE Vision features supported in Cognex API	12
Adapters and Cables	12
Sample Programs	13
Triggers, Strobes, and Bandwidth	13
Third Party Considerations	13
Troubleshooting	13
Precautions	16

Symbols

The following symbols indicate safety precautions and supplemental information:

 **WARNING:** This symbol indicates a hazard that could cause death, serious personal injury or electrical shock.

 **CAUTION:** This symbol indicates a hazard that could result in property damage.

 **Note:** This symbol indicates additional information about a subject.

 **Tip:** This symbol indicates suggestions and shortcuts that might not otherwise be apparent.

Cognex Software and GigE Vision Cameras

Cognex VisionPro and CVL software provide support for acquiring, processing, and displaying images from GigE Vision cameras.

For information on using a GigE Vision camera with your Cognex vision software, see the VisionPro or CVL documentation. In addition, the [Cognex documentation support site](#) may contain additional documentation about using GigE Vision for your machine vision application.

Security Requirements

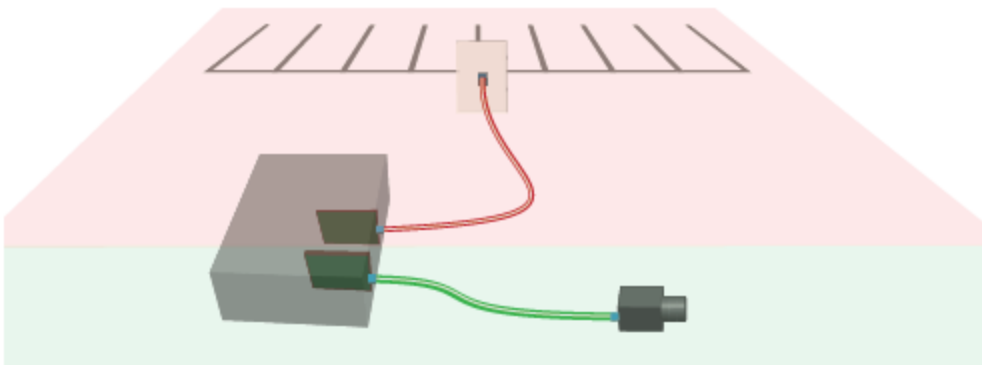
In addition to the standard software and hardware requirements listed in your product documentation, your PC must include one of the following security mechanisms to run Cognex software:

- A Cognex frame grabber
- A Cognex security key (dongle)

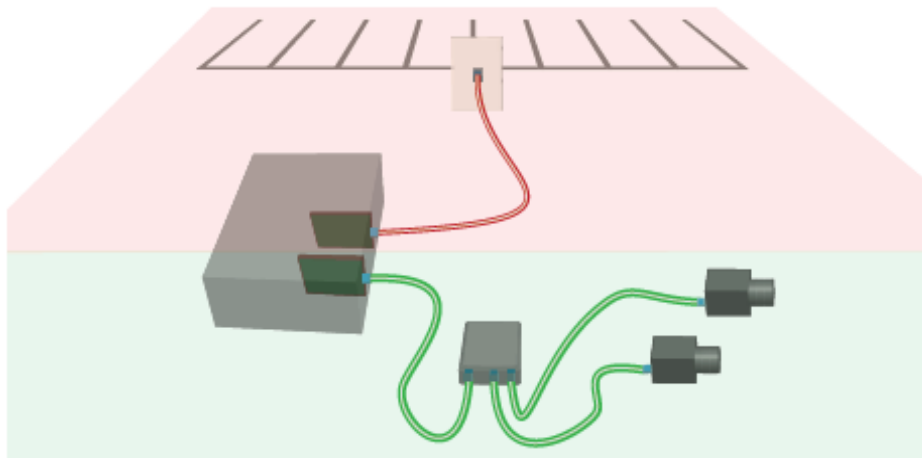
Either of these devices can provide your Cognex software with required license information. See your Cognex sales representative for details.

GigE Vision Camera Networks

For an application that uses only one camera, the GigE Vision camera network will consist only of a Gigabit Ethernet network adapter and the camera:



If you are using more than one camera, you can use a multi-port network adapter or a Gigabit Ethernet switch (shown):



Be aware the network bandwidth is shared among all connected the cameras when you are using a network switch.

Your PC may already have a network adapter that is used to connect your PC to a local area network or to the Internet. The network adapter(s) you use for image acquisition should be dedicated only for GigE Vision cameras and not connected to your local area network or to the Internet.

To avoid electromagnetic interference, any Ethernet cables you use must be shielded. Cognex strongly recommends Cat 6 or Cat 7 cables with S/STP shielding.

GigE Vision Network Adapters and Switches

Cognex recommends Gigabit Ethernet network adapters that use the PCI Express bus, and supports a variety of multi-port adapters and Ethernet switches. Select a network adapter that support a minimum of 9000 Kbytes jumbo frame size.

Contact your Cognex sales representative for assistance in choosing the best GigE Vision devices for your vision solution, and install the Gigabit Ethernet network device(s) according to the manufacturer's instructions.


Install Your Cognex Vision Software

After installing the manufacturer's drivers for your GigE Vision network adapters, install your Cognex vision software (CVL or VisionPro) including the Cognex Drivers.

CVL and VisionPro installations include a utility for configuring your GigE Vision network adapter and camera, as well as the eBus Universal Pro driver that improves the performance of GigE Vision applications for most production environments.

GigE Vision Configuration Tool

Launch the Cognex GigE Vision Configuration Tool to assign IP addresses to each GigE Vision network adapter port and the camera connected to it.

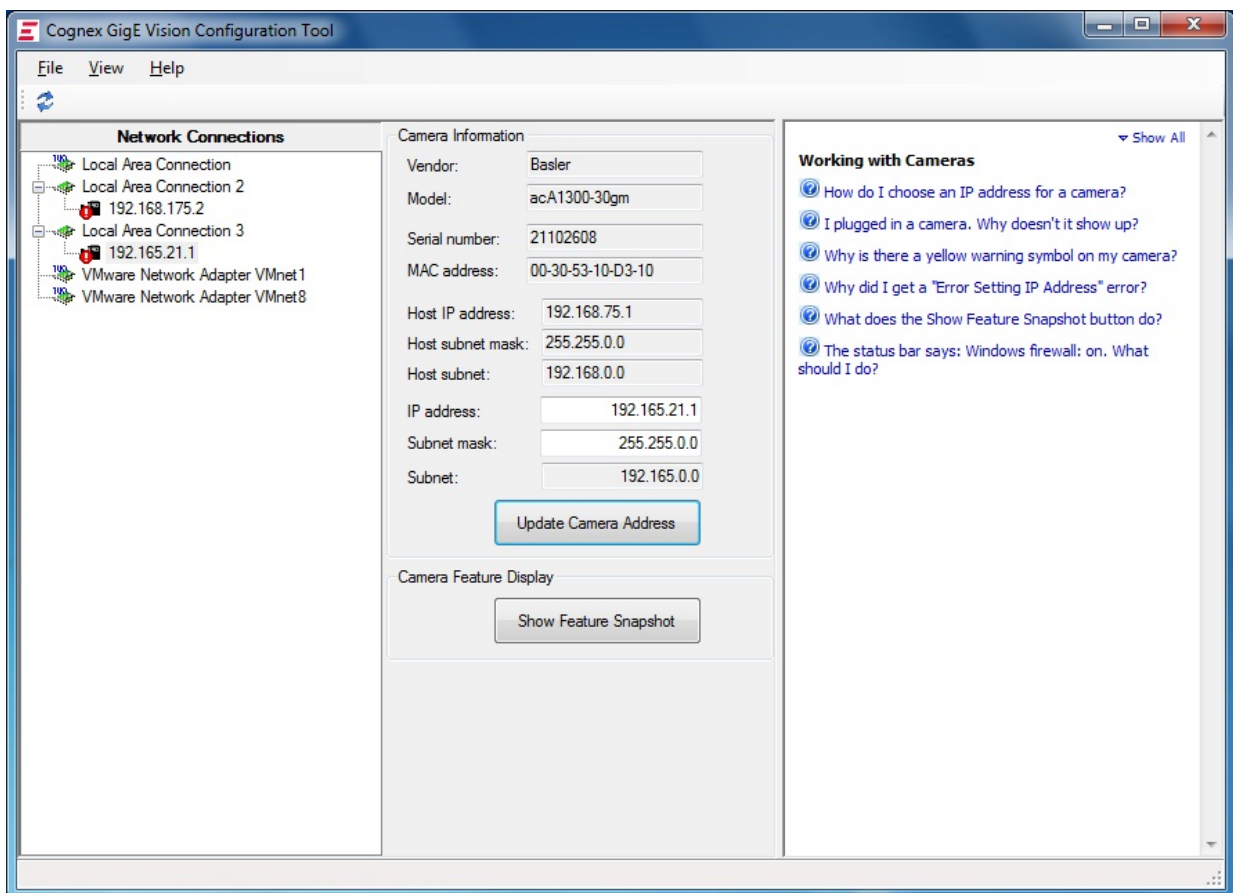
 **Tip:** Ensure that your GigE camera is connected to the adapter and powered on before launching the GigE Vision Configuration Tool. Stop any applications that use CVL or VisionPro.

Start the GigE Vision Configuration Tool for CVL through the Start menu by choosing:

Cognex->CVL->Cognex Utilities->GigE Vision->Cognex GigE Vision Configuration Tool

Start the GigE Vision Configuration Tool for VisionPro through the Start menu by choosing:

Cognex->VisionPro->Utilities->GigE Vision Configuration Tool



The center panel displays information about the available network connections and cameras. In most environments at least one of your **Local Area Connections** is associated with the network connection of the PC. Check with your network administrator if you are not sure which one it is.

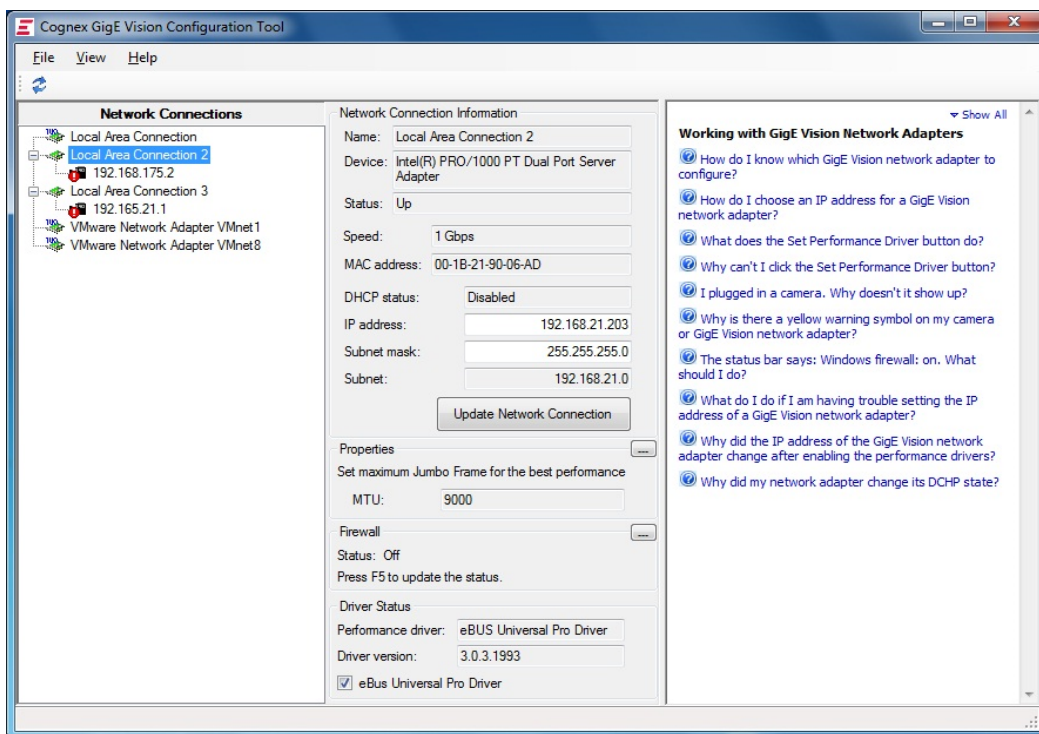
An interactive list of Questions and Answers appears on the right side of the utility to guide you in setting IP addresses and configuring other system properties.

Network Adapter IP Address

Each GigE Vision network adapter (or each port of a multi-port adapter) must have its own IP address on its own subnet. To set the IP address for a GigE Vision network adapter:

1. Select the **Local Area Connection** that corresponds to the adapter port connected to your GigE Vision camera(s). Refer to the embedded Questions and Answers in the utility for guidance in selecting the correct **Local Area Connection**.

The center panel displays information about the selected adapter port:



2. Enter an **IP address** and **Subnet mask** for the adapter.
3. Click **Update Network Connection**. If you are not familiar with TCP/IP networking,

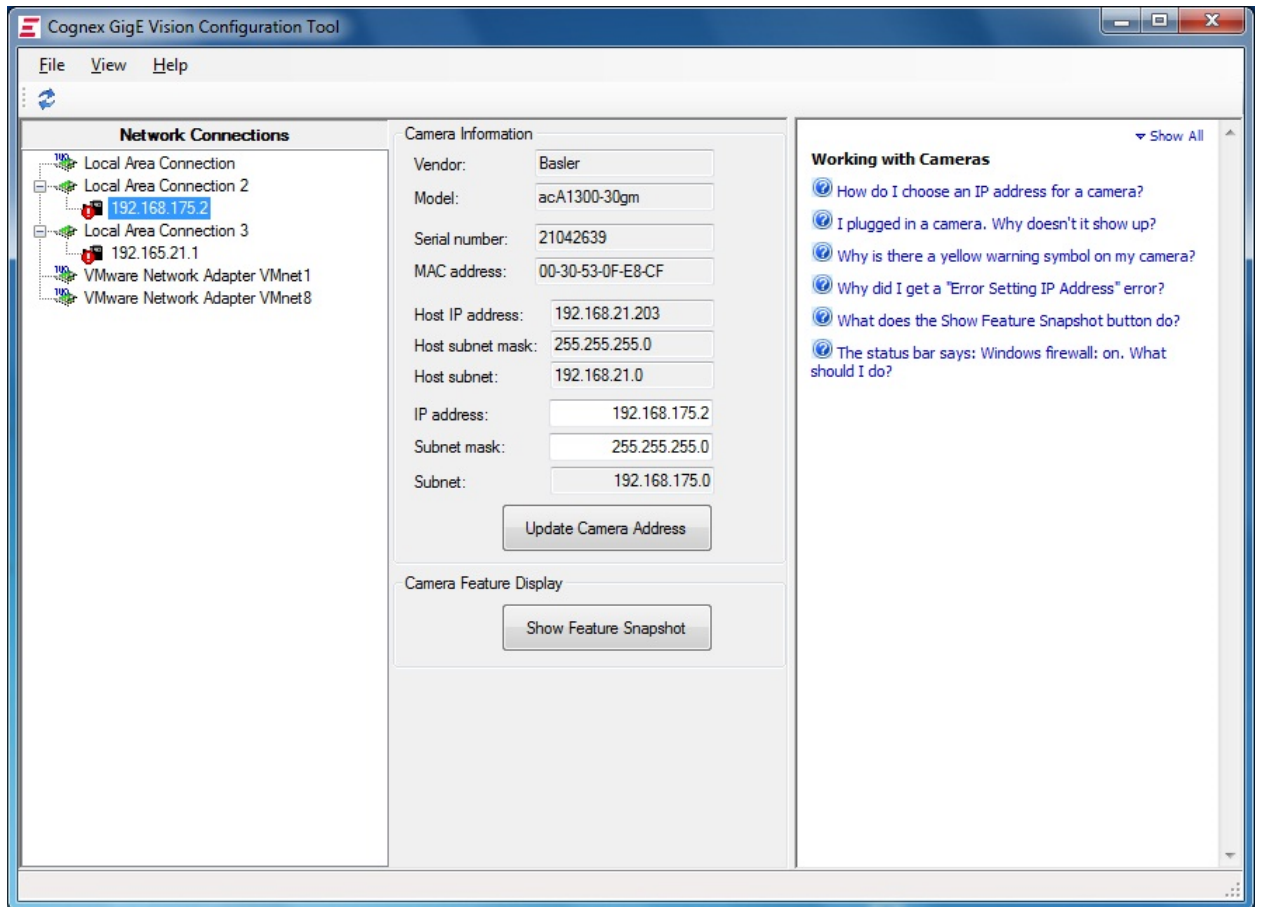
If you are not familiar with TCP/IP networking, Cognex recommends you use the following values:

Network Adapter	IP Address	Subnet Mask
1st adapter port	192.168.21.203	255.255.255.0
2nd adapter port	192.168.22.203	255.255.255.0
3rd adapter port	192.168.23.203	255.255.255.0

Camera IP Addresses

Each camera must have an IP address in the same subnet as its network adapter. To set the IP address for a GigE Vision camera:

1. Select a camera on the left. The center panel displays information about the selected camera.



2. Enter an **IP Address** and a **Subnet mask** for the camera.

The IP address of the camera must be on the same subnet as its network adapter (or adapter port), which appears as the **Host IP address**. In addition, the subnet mask for the camera must be the same as the **Host subnet mask**.

For example, with a network adapter IP address of 192.168.21.203 and a subnet mask of 255.255.255.0, the camera connected to this network adapter can be numbered from 192.168.21.1 to 192.168.21.254, excluding 192.168.21.203 (the network adapter IP address).

3. Click **Update Camera Address**.

CVL and VisionPro order cameras according to their network addresses.

Be aware that you cannot successfully change the IP address of a camera while your vision application is running. You must stop the application and restart it after changing the IP address.

Check Windows Firewall Status

The GigE Vision Configuration Tool indicates the Windows Firewall On/Off status for the selected adapter port.

Refer to the embedded Questions and Answers of the GigE Vision Configuration Tool for details on turning the Windows Firewall On or Off for your particular operating system.



You have several other options for turning Windows Firewall On/Off and preventing it from interfering with GigE acquisition:

- By network domain type
- By connection
- By application

In addition, Windows allows users to customize the firewall response to various network activity. Consult your Windows documentation for details.

Be aware that the utility only detects the local setting for Windows Firewall, and not any settings determined by a group policy that overrides the local setting on this PC. In these situations the GigE Vision Configuration Tool can report that the Windows Firewall is on for the PC while the group policy safely disables it, allowing you to ignore the warning message.

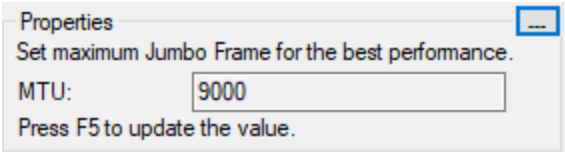
Change System Properties

The GigE Vision Configuration Tool displays a warning when specific system properties such as the jumbo frame value are not set to the most desirable levels, as shown in the following figure. Click the settings button to open the Windows Control Panel.

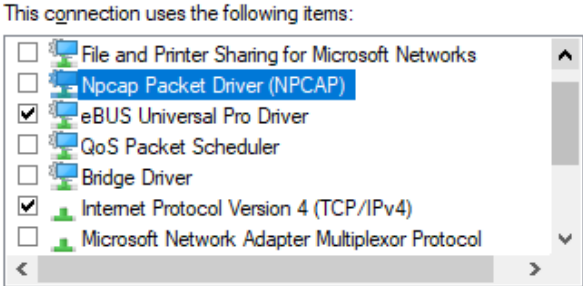
Click **Configure** and then choose the **Advanced** tab.

Modify the following properties as necessary:

- Select the **Jumbo Packet** property and choose a value of 9000 or greater in the dialog box:



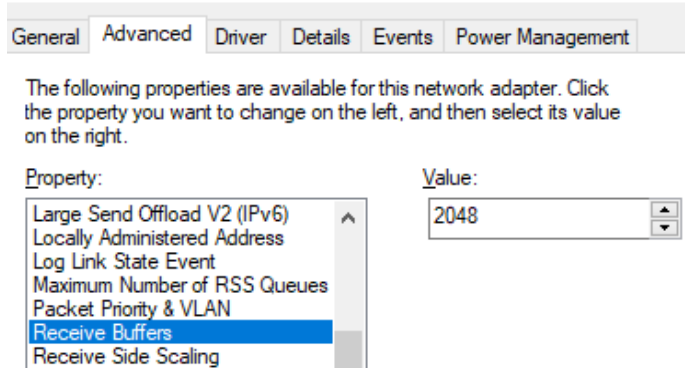
- In the **Networking** tab, clear all the check boxes listed under **This connection uses the following items** except for **eBUS Universal Pro Driver and Internet Protocol Version 4 (TCP/IPv4)**.



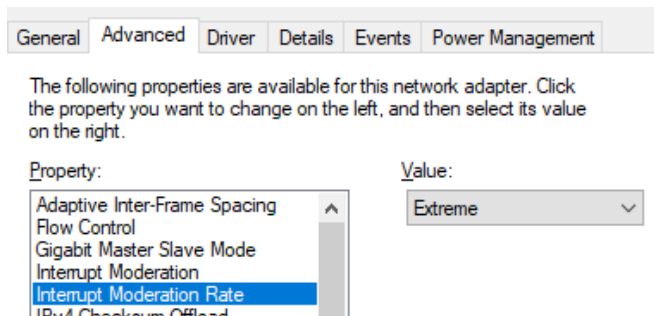
- Ensure any third party Ethernet driver is either disabled on the network stack, as shown in the previous figure, or uninstalled.

In addition, Cognex recommends you modify the following properties for this network connection, which may or may not be grouped together with the previous properties:

- Change the **Receive Buffers** property and choose the highest possible value in its **Value** list.



- Change the **Interrupt Moderation Rate** property to **Extreme** in its **Value** list.



Refer to the embedded Questions and Answers of the GigE Vision Configuration Tool for more details on what system properties you should modify as necessary.

Disable Unused Network Clients

By default, Windows installs and enables network clients that are not required for GigE Vision. By disabling these unused clients, you can improve GigE performance.

To disable unused clients under Windows 7:

1. Open the **Control Panel > Network and Sharing Center**.
2. Click **Change Adapter Settings**.
3. Right-click on the icon that represents the Gigabit Ethernet adapter you are using for the GigE Vision network and choose **Properties**.
4. Ensure that only the following items are checked:
 - **Internet Protocol Version 4 (TCP/IPv4)**
 - **Ethernet Bus Filter (eBus Universal)**

As stated elsewhere in this guide, ensure any third-party Ethernet drivers are disabled on the network stack or uninstalled.

5. Click **OK**.

Using GigE Vision Cameras

The manufacturer's camera documentation is the best source of information for your GigE Vision camera.

Video Formats

GigE Vision cameras you obtain through Cognex use one of the following Generic GigE Vision video formats:

- Mono, Mono10, Mono10 Packed, Mono12, Mono12 Packed, Mono14, or Mono16
- Bayer Color
- RGB8 Color
- YUV422 Packed

There are no camera-specific CCF files for GigE Vision cameras.

Supported GigE Vision Features

Cognex vision software supports the following GigE Vision features through the Cognex vision software API.

GigE Vision features supported in Cognex API

- AcquisitionMode
- AcquisitionStart
- AcquisitionStop
- AcquisitionFrameRateAbs
- BlackLevel
- ExposureTime
- Gain
- OffsetX
- OffsetY
- PixelFormat
- TriggerMode
- Width
- Height

See your camera documentation for a complete list of supported features.

Always set features with a Cognex API if one exists. If a Cognex API does not exist for a given feature, you can read and write directly using the VisionPro class `ICogGigEAccess` or the CVL class `ccGigE VisionCamera`.

Adapters and Cables

Ensure that all components in your GigE Vision network conform to Gigabit Ethernet standards and that you are using Cat 6, Cat 6a, or Cat 7 cables with S/STP shielding.

Sample Programs

Your Cognex software includes several sample programs that will help you learn how to use VisionPro or CVL with your GigE Vision camera.

You can find VisionPro sample programs in: `%VPRO_ROOT%\samples\Programming\Acquisition`

If you are using QuickBuild scripting, you can find examples QuickBuild job files in the following directory: `%VPRO_ROOT%\samples\QuickBuild\`

The QuickBuild job files that illustrate GigE Vision techniques are named beginning with `Script_GigE`.

You can find CVL sample programs in `%VISION_ROOT%\sample\cvl`

Triggers, Strobes, and Bandwidth

In many cases your vision application will use strobes to illuminate the scene and freeze motion and triggers to control image acquisition. To ensure reliable operation, you may also be concerned about the bandwidth of your GigE Vision network.

In general the properties that control strobes, triggers, and bandwidth differ from manufacturer to manufacturer and from camera to camera, which makes it impossible to support them directly in the Cognex vision API.

The sample programs installed with your software include examples of how to use triggers, strobes, and how to control bandwidth on GigE Vision cameras.

You can use the timestamps included with each acquired image to detect missed images or missed triggers. You can learn more about timestamps from the Using Timestamps with GigE Vision Cameras topic in the VisionPro User's Guide. If you are using CVL, see the sample program `%CVL_ROOT%\sample\cvl\gige_timestamp.cpp`.

Third Party Considerations

If your camera included the manufacturer's drivers or software development kit, Cognex recommends that you not install them. If you have already installed such drivers, you should uninstall them before installing Cognex software.

All systems that use GigE Vision set the environment variable `%GENICAM_ROOT_V2_4%` and `%GENICAM_CACHE_V2_4%` to point to the location of the GenICam libraries. When you install Cognex vision software, the installer sets this environment variable to the location where it installs its libraries. If you have installed another vendor's GigE Vision product, it may have already set the environment variable. In this case, the installer will warn you and ask you to confirm the change or to quit the installer.

Troubleshooting

- If you are experiencing difficulty setting the IP address of a GigE network adapter, consult the Release Information for your particular Cognex software for the latest news and information.
- In most cases, image corruption or failure to create acquisition FIFOs is the result of using incompatible Gigabit Ethernet adapters. The best way to correct or avoid such problems is to use a Cognex-recommended adapter.
- During the installation of the eBus Universal Pro Driver on Windows 7, Windows may display a Security Alert dialog. To permanently accept Pleora's Microsoft Authenticode certificate, when the dialog appears, click Pleora Technologies Inc > Install Certificate > Next. Select Place all certificates in the following store. In the Certificate store field, type Trusted Publishers. Click Next > Finish > OK. The Security Alert dialog will no longer appear.
- Aborting the Cognex Driver installation can leave the network adapter in an invalid state.
- Intel ProSet software may not be compatible with the eBus Universal Pro Driver that Cognex uses. Cognex recommends that you do not install Intel ProSet software or other software that behaves similarly.

- The GigE Vision eBus Universal Pro Driver does not support power management. To turn off your PC, use **Shut down** rather than **Standby** or **Hibernate**.
- Due to an issue with the Pacific Instruments USB driver installer, the eBus Universal Pro Driver may be removed during the installation. To fix the issue, re-install the Cognex Drivers after installing the USB drivers.
- Click the refresh button or select **View > Refresh** to update the GigE Vision Configuration Tool with the latest IP addresses, which might not reflect the current settings after you set the IP address of a GigE network adapter or GigE Vision camera.
- In some cases a VisionPro application that uses a dual-tap GigE Vision camera can exhibit a vertical line down the center of the image while the two halves appear unbalanced. Refer to the topic [Configuring a Dual-Tap GigE Vision Camera](#) in the VisionPro online documentation for details on how to balance the taps.
- Be aware that while jumbo frame support is enabled by default on most NETGEAR switches, it is disabled by default on the NETGEAR GS110TP Power over Ethernet switch. Refer to your GS110TP documentation for instructions on configuring jumbo frame support. Cognex recommends the maximum size available.

Precautions

To reduce the risk of injury or equipment damage, observe the following precautions when you install the Cognex product:

- Route cables and wires away from high-current wiring or high-voltage power sources to reduce the risk of damage or malfunction from the following causes: over-voltage, line noise, electrostatic discharge (ESD), power surges, or other irregularities in the power supply.
- Changes or modifications not expressly approved by the party responsible for regulatory compliance could void the user's authority to operate the equipment.
- Ensure that the cable bend radius begins at least six inches from the connector. Cable shielding can be degraded or cables can be damaged or wear out faster if a service loop or bend radius is tighter than 10X the cable diameter.
- This device is certified for office use only and if used at home, there can be frequency interference problems.
- This device should be used in accordance with the instructions in this manual.
- All specifications are for reference purposes only and can change without notice.

